

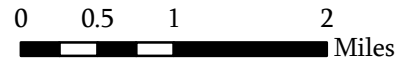
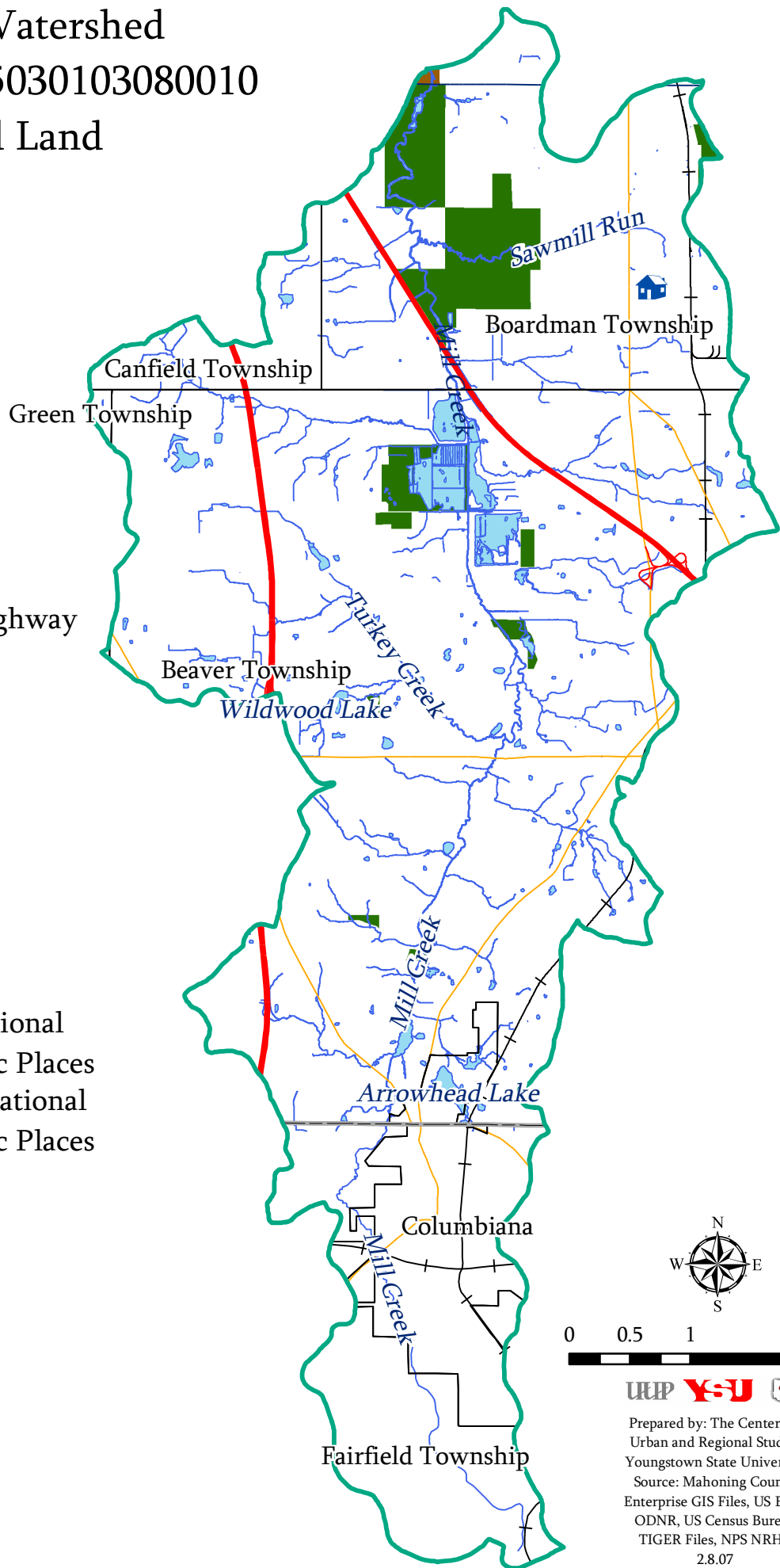
Mill Creek Watershed

Sub-Watershed 05030103080010

Protected Land

Legend

-  County Boundary
-  Political Boundary
-  Limited Access Highway
-  U.S. Highway
-  State Highway
-  Railroad
-  Open Water
-  Stream
-  Park or Other Conservation Area
-  District on the National Register of Historic Places
-  Structure on the National Register of Historic Places



Prepared by: The Center for Urban and Regional Studies
 Youngstown State University
 Source: Mahoning County Enterprise GIS Files, US EPA, ODNR, US Census Bureau TIGER Files, NPS NRHP
 2.8.07