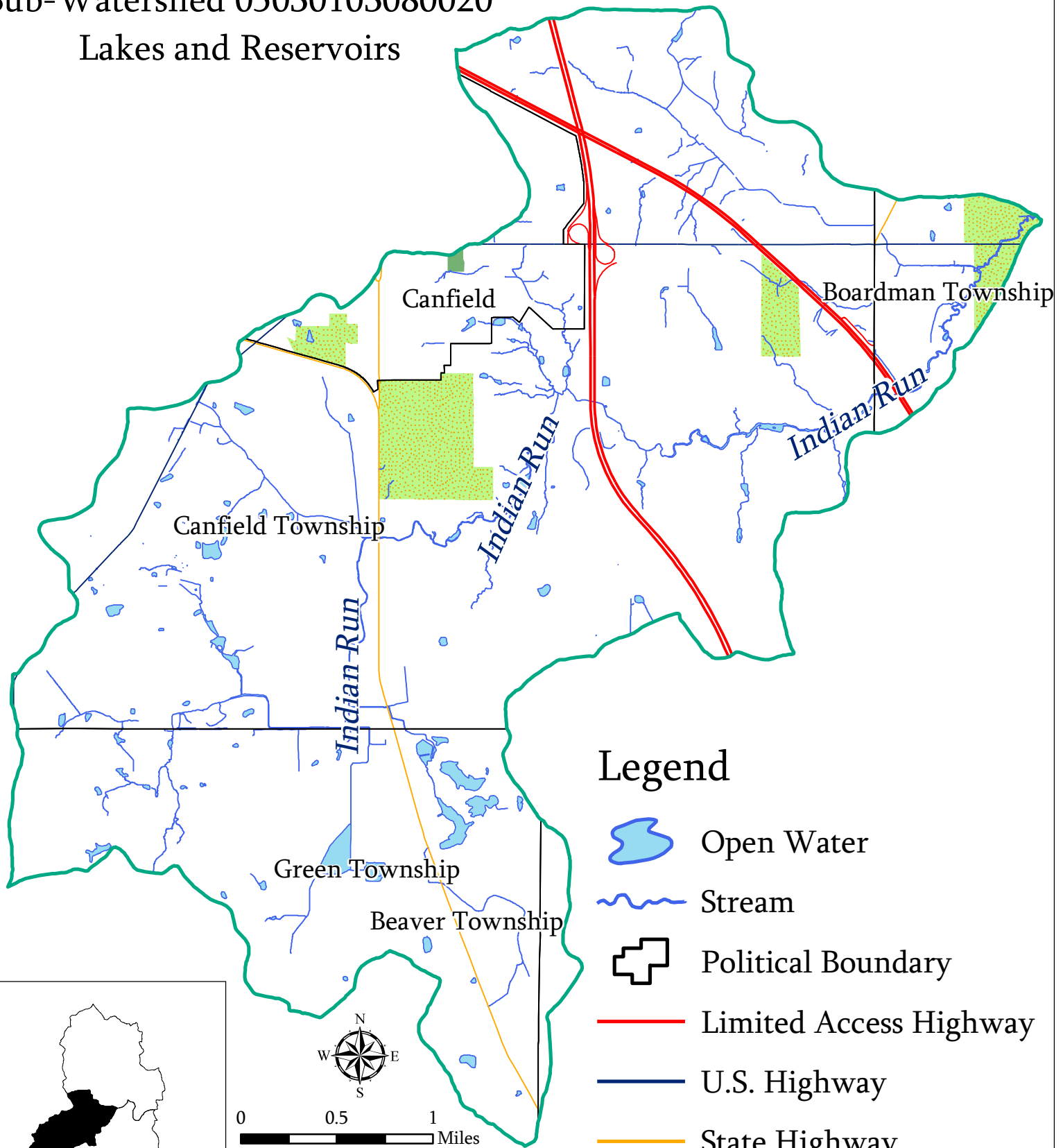


Mill Creek Watershed

Sub-Watershed 05030103080020

Lakes and Reservoirs



Legend

- Open Water
- Stream
- Political Boundary
- Limited Access Highway
- U.S. Highway
- State Highway
- Cemetery
- Park



0 0.5 1 Miles



Prepared by: The Center for
Urban and Regional Studies
Youngstown State University
Source: Mahoning County
Enterprise GIS Files, US EPA,
ODNR, US Census Bureau
TIGER Files
2.8.07

