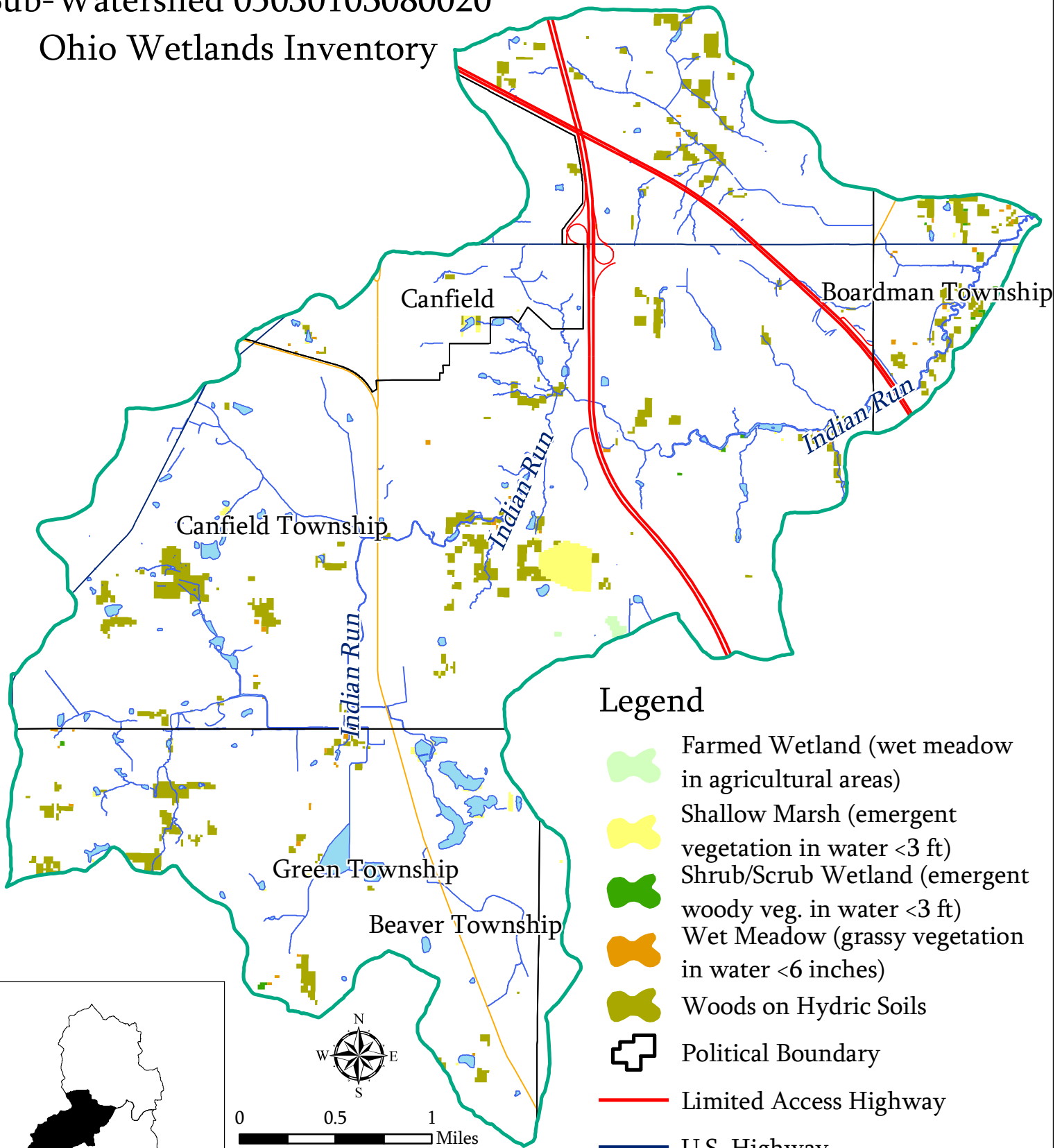


Mill Creek Watershed

Sub-Watershed 05030103080020

Ohio Wetlands Inventory



Legend

- Farmed Wetland (wet meadow in agricultural areas)
- Shallow Marsh (emergent vegetation in water <3 ft)
- Shrub/Scrub Wetland (emergent woody veg. in water <3 ft)
- Wet Meadow (grassy vegetation in water <6 inches)
- Woods on Hydric Soils
- Political Boundary
- Limited Access Highway
- U.S. Highway
- State Highway
- Open Water
- Stream



0 0.5 1 Miles



Prepared by: The Center for
Urban and Regional Studies
Youngstown State University
Source: Mahoning County
Enterprise GIS Files, US EPA,
ODNR, US Census Bureau
TIGER Files
2.8.07