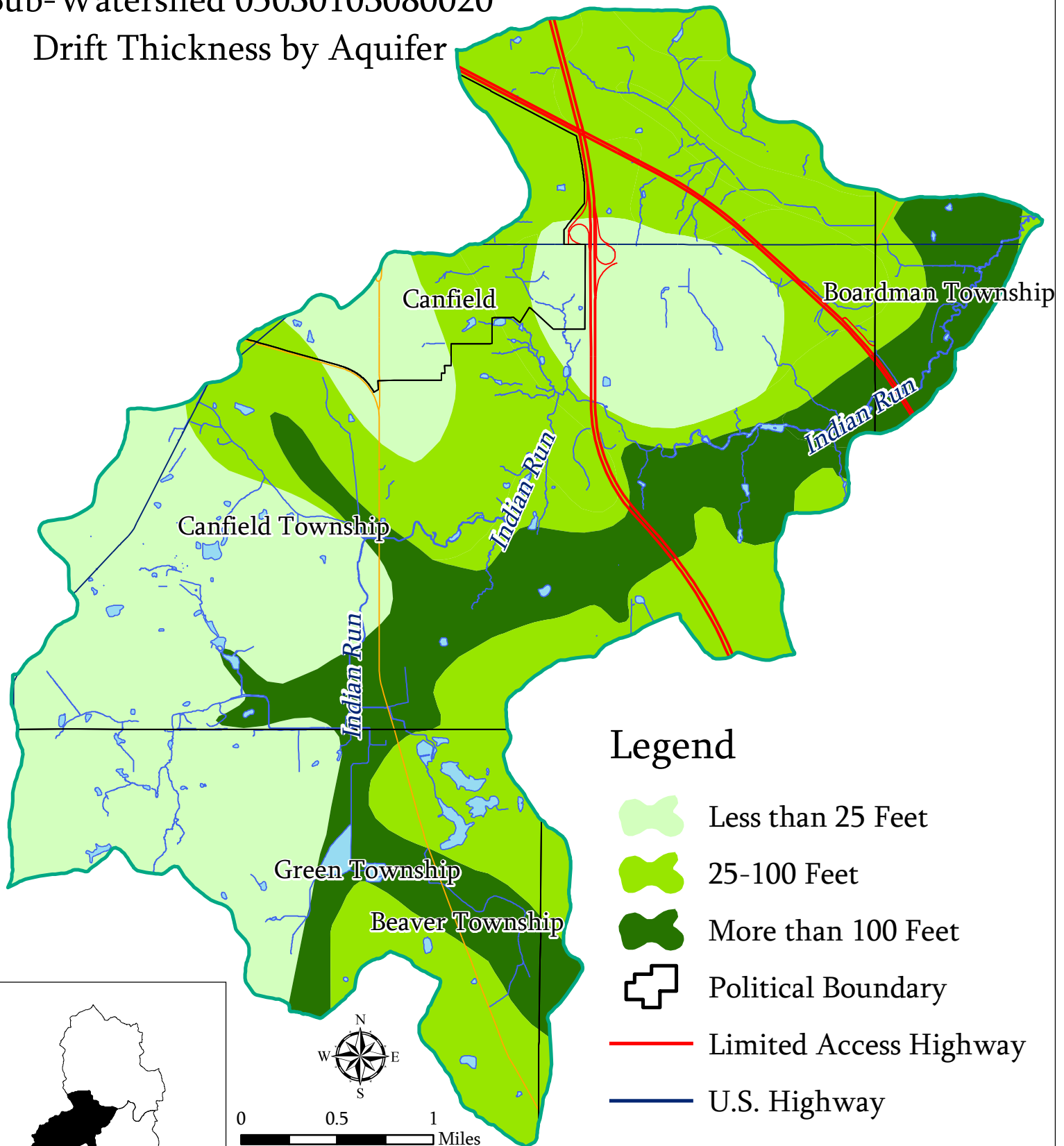


Mill Creek Watershed

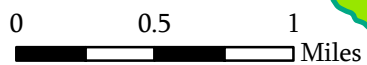
Sub-Watershed 05030103080020

Drift Thickness by Aquifer



Legend

-  Less than 25 Feet
-  25-100 Feet
-  More than 100 Feet
-  Political Boundary
-  Limited Access Highway
-  U.S. Highway
-  State Highway
-  Open Water
-  Stream



UEHP Y-S-U GIS
Prepared by: The Center for
Urban and Regional Studies
Youngstown State University
Source: Mahoning County
Enterprise GIS Files, US EPA,
ODNR, US Census Bureau
TIGER Files
2.8.07