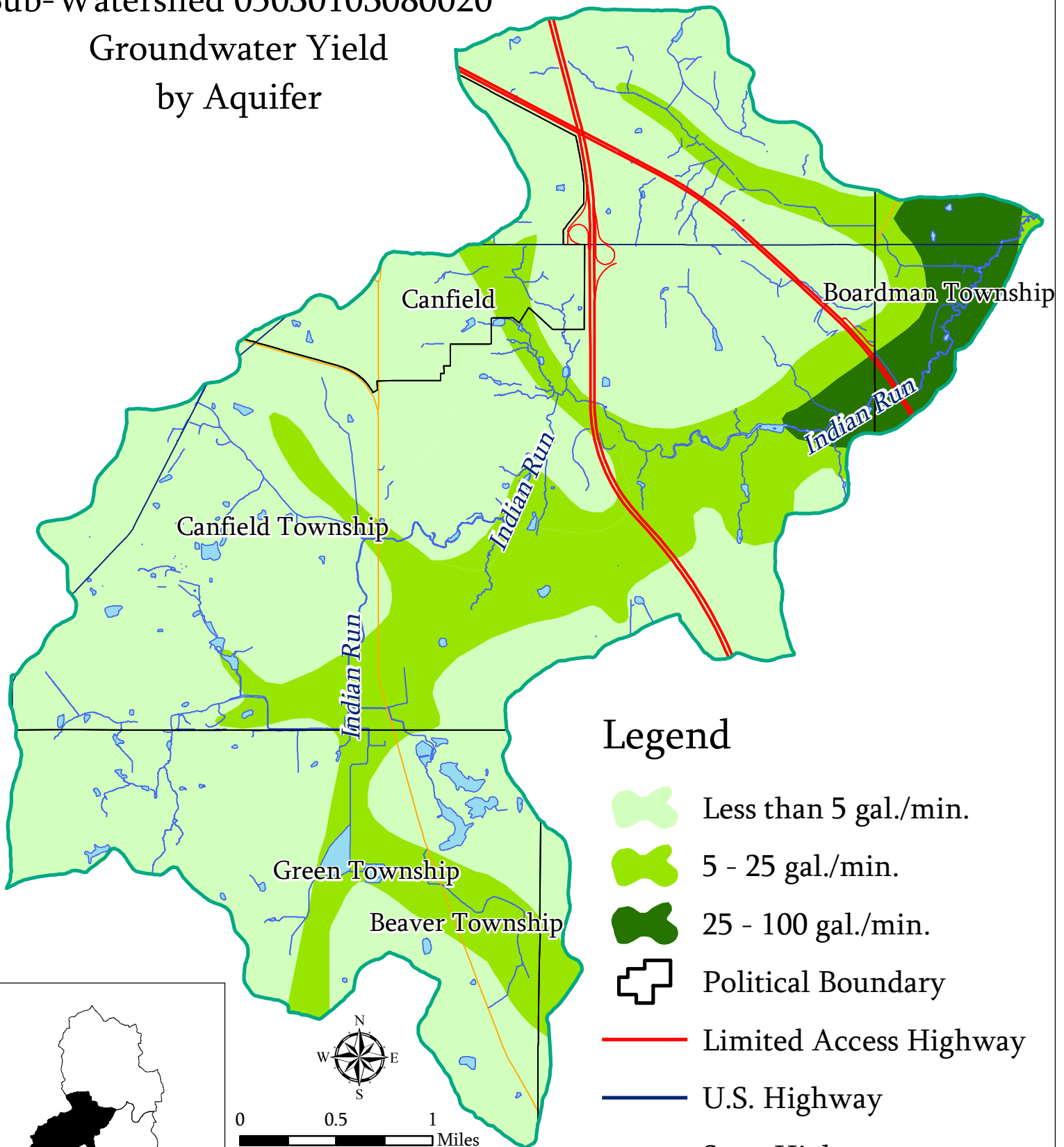


# Mill Creek Watershed

## Sub-Watershed 05030103080020

### Groundwater Yield by Aquifer



### Legend

- Less than 5 gal./min.
- 5 - 25 gal./min.
- 25 - 100 gal./min.
- Political Boundary
- Limited Access Highway
- U.S. Highway
- State Highway
- Open Water
- Stream

0 0.5 1 Miles

UEEP YSU GIS  
Prepared by: The Center for  
Urban and Regional Studies  
Youngstown State University  
Source: Mahoning County  
Enterprise GIS Files, US EPA,  
ODNR, US Census Bureau  
TIGER Files  
2.8.07

