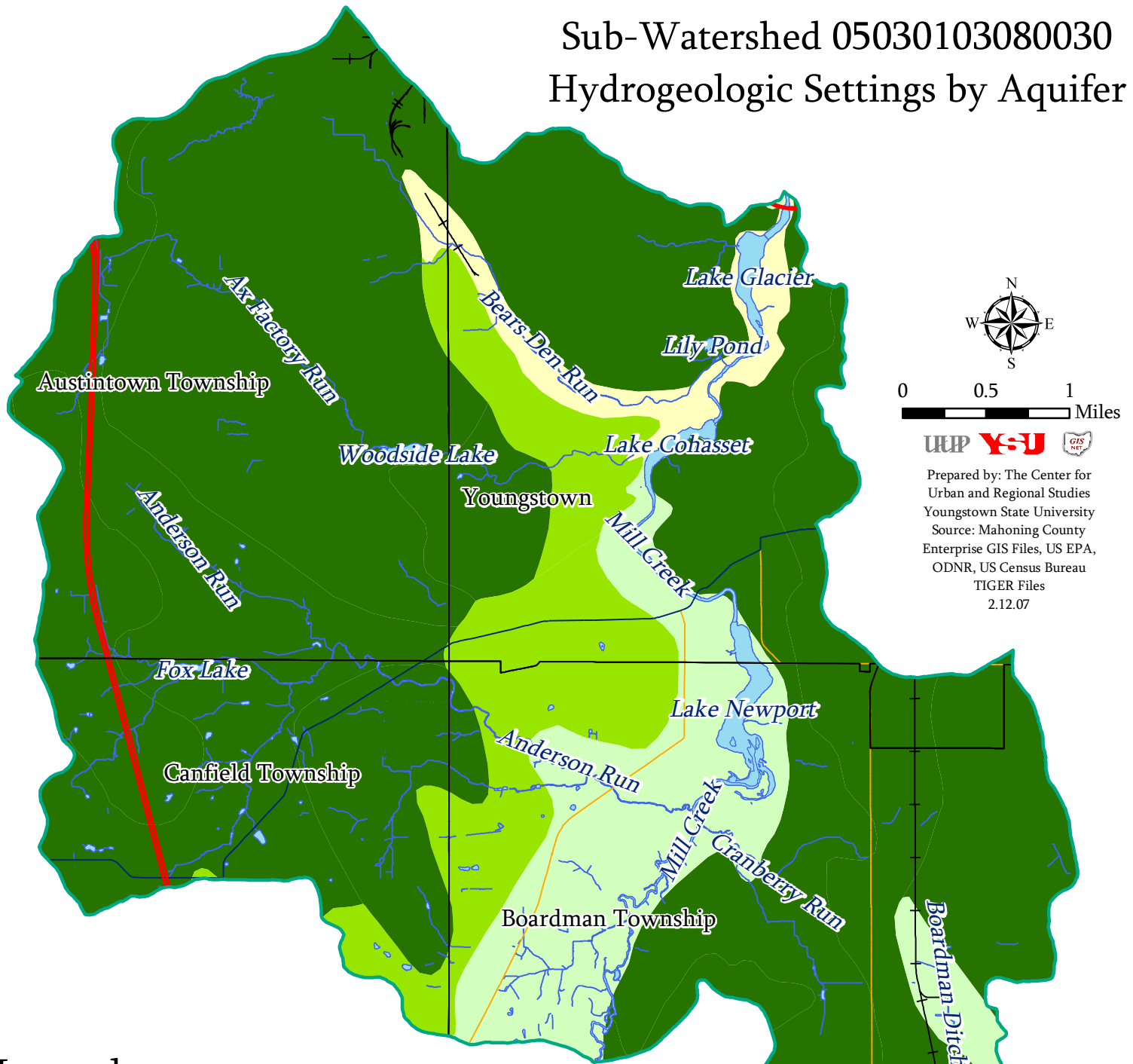


# Mill Creek Watershed

## Sub-Watershed 05030103080030

### Hydrogeologic Settings by Aquifer



0 0.5 1 Miles



Prepared by: The Center for Urban and Regional Studies  
 Youngstown State University  
 Source: Mahoning County Enterprise GIS Files, US EPA, ODNR, US Census Bureau TIGER Files  
 2.12.07

### Legend

- Alluvial
- Buried Valley
- Outwash/Kame
- Thin Upland
- Political Boundary
- Limited Access Highway
- U.S. Highway
- State Highway
- Railroad
- Open Water
- Stream

