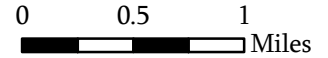
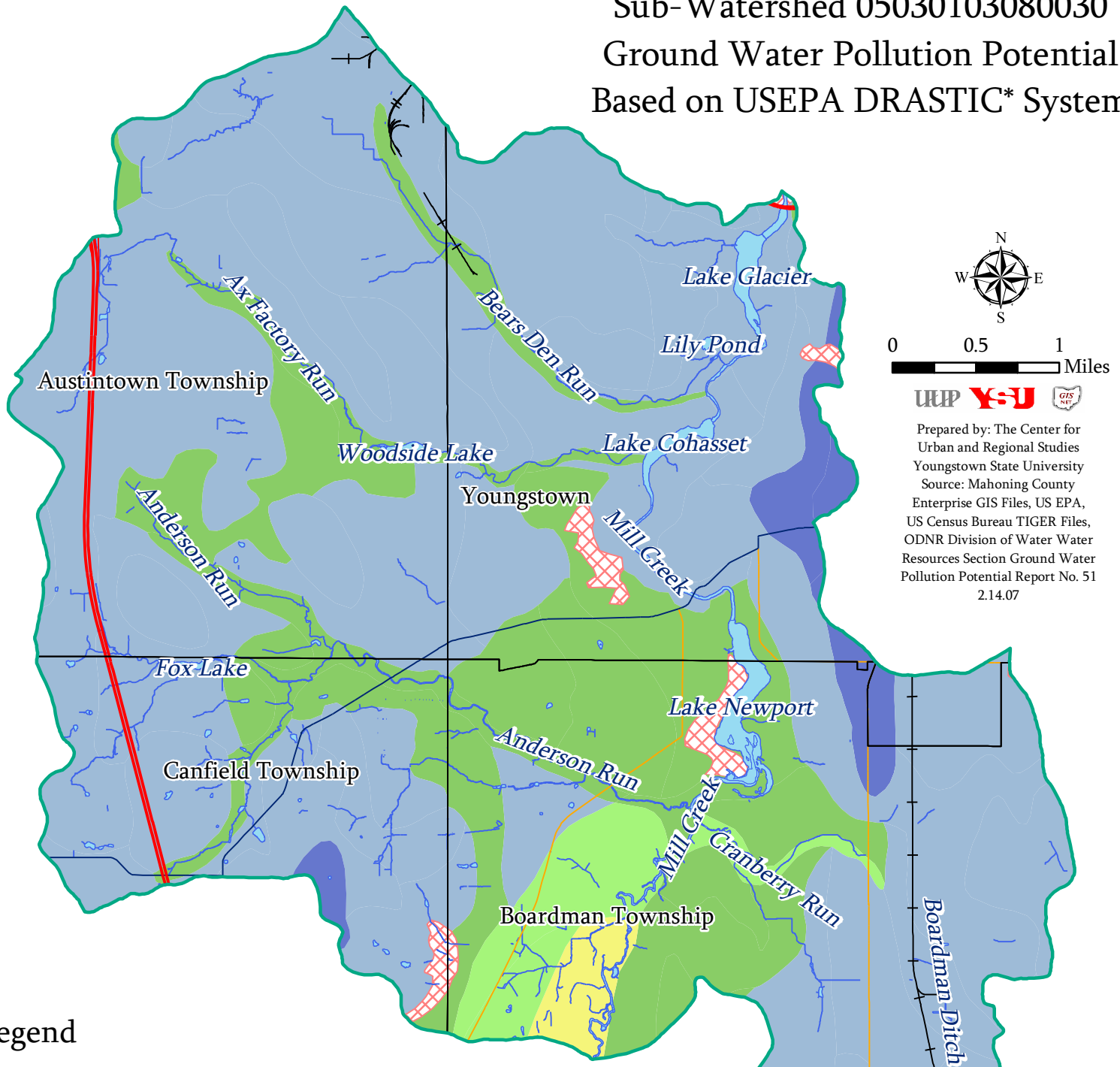


Mill Creek Watershed

Sub-Watershed 05030103080030

Ground Water Pollution Potential Based on USEPA DRASTIC* System



Prepared by: The Center for
Urban and Regional Studies
Youngstown State University
Source: Mahoning County
Enterprise GIS Files, US EPA,
US Census Bureau TIGER Files,
ODNR Division of Water Water
Resources Section Ground Water
Pollution Potential Report No. 51
2.14.07

Legend

- | | | | |
|--|---------------|--|------------------------|
| | Not Rated | | Political Boundary |
| | 79 or Less | | Limited Access Highway |
| | 80 - 99 | | U.S. Highway |
| | 100 - 119 | | State Highway |
| | 120 - 139 | | Railroad |
| | 140 - 159 | | Open Water |
| | 160 - 179 | | Stream |
| | 180 - 199 | | |
| | 180 - 199 | | |
| | More than 200 | | |

*Incorporates the major hydrogeologic factors that affect and control ground water movement and occurrence including Depth to water, net Recharge, Aquifer media, Soil media, Topography, Impact of the vadose zone media, and hydraulic Conductivity of the aquifer
(ODNR)

