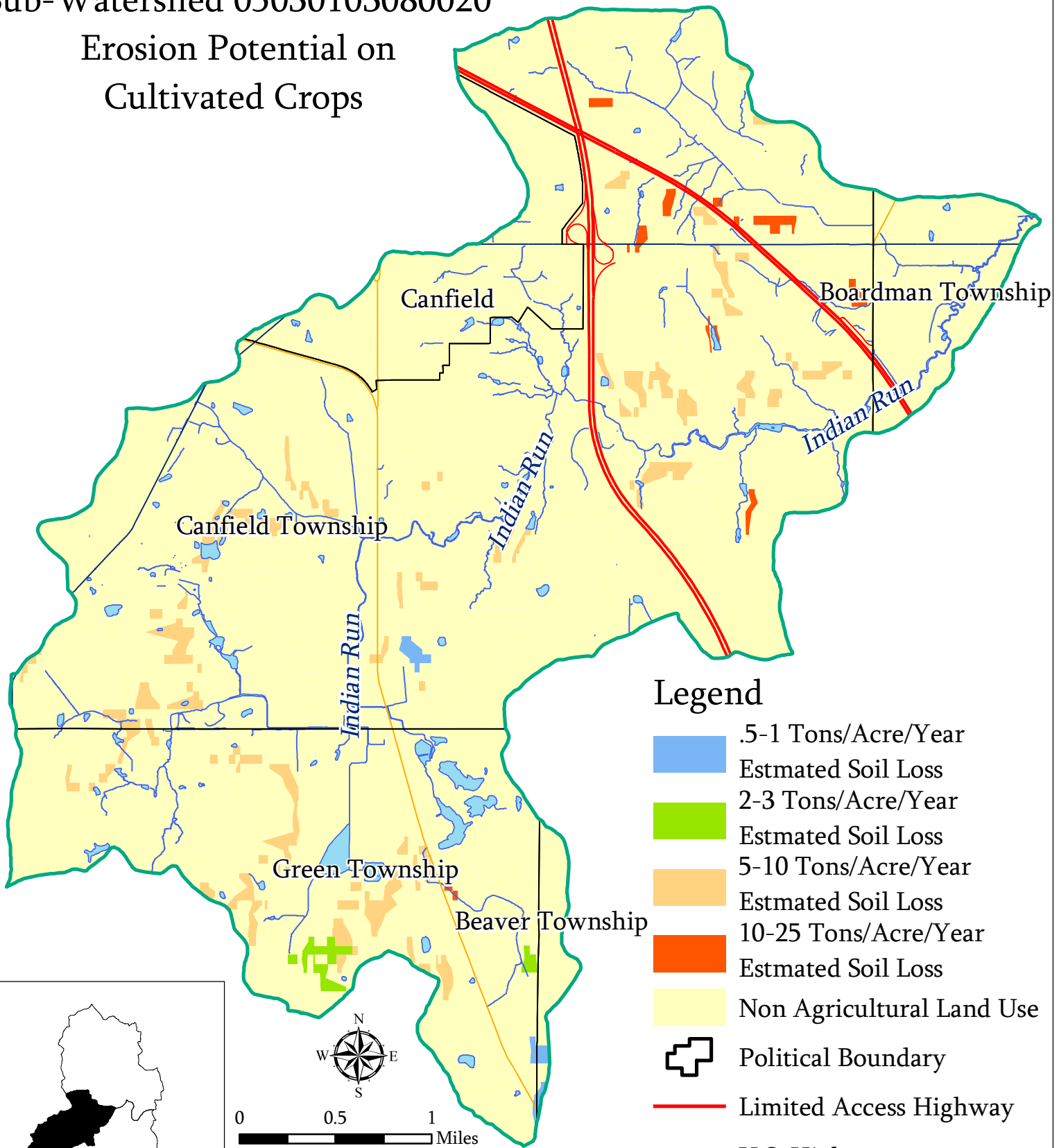


# Mill Creek Watershed

## Sub-Watershed 05030103080020

### Erosion Potential on Cultivated Crops



#### Legend

- .5-1 Tons/Acre/Year
- Estimated Soil Loss
- 2-3 Tons/Acre/Year
- Estimated Soil Loss
- 5-10 Tons/Acre/Year
- Estimated Soil Loss
- 10-25 Tons/Acre/Year
- Estimated Soil Loss
- Non Agricultural Land Use
- Political Boundary
- Limited Access Highway
- U.S. Highway
- State Highway
- Open Water
- Stream

0 0.5 1 Miles



Prepared by: The Center for  
Urban and Regional Studies  
Youngstown State University  
Source: Mahoning County  
Enterprise GIS Files, US EPA,  
ODNR, US Census Bureau  
TIGER Files  
2.20.07

