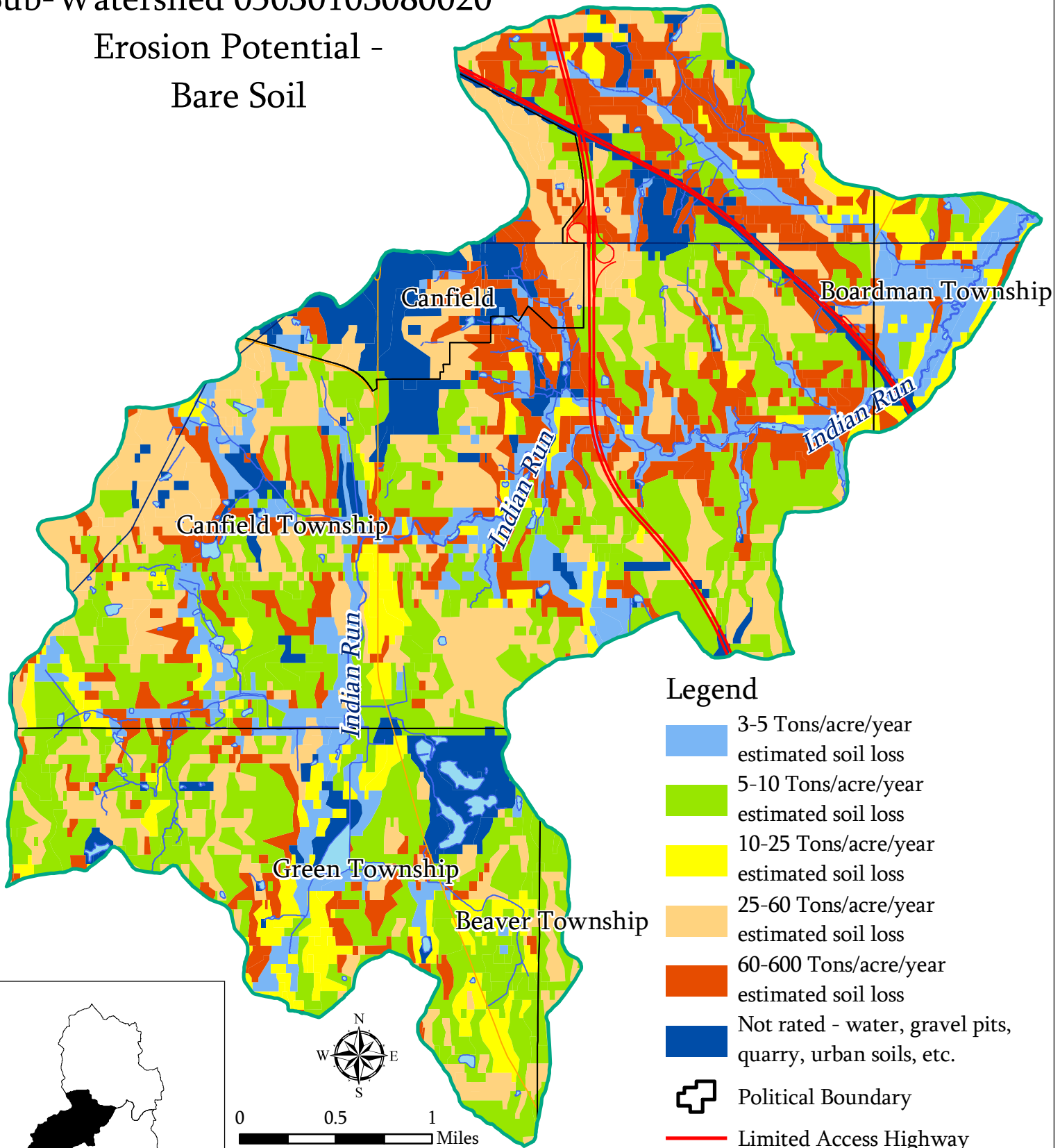


# Mill Creek Watershed

## Sub-Watershed 05030103080020

### Erosion Potential - Bare Soil



#### Legend

- 3-5 Tons/acre/year estimated soil loss
- 5-10 Tons/acre/year estimated soil loss
- 10-25 Tons/acre/year estimated soil loss
- 25-60 Tons/acre/year estimated soil loss
- 60-600 Tons/acre/year estimated soil loss
- Not rated - water, gravel pits, quarry, urban soils, etc.
- Political Boundary
- Limited Access Highway
- U.S. Highway
- State Highway
- Open Water
- Stream

0 0.5 1 Miles



Prepared by: The Center for  
Urban and Regional Studies  
Youngstown State University  
Source: Mahoning County  
Enterprise GIS Files, US EPA,  
ODNR, US Census Bureau  
TIGER Files  
2.20.07

