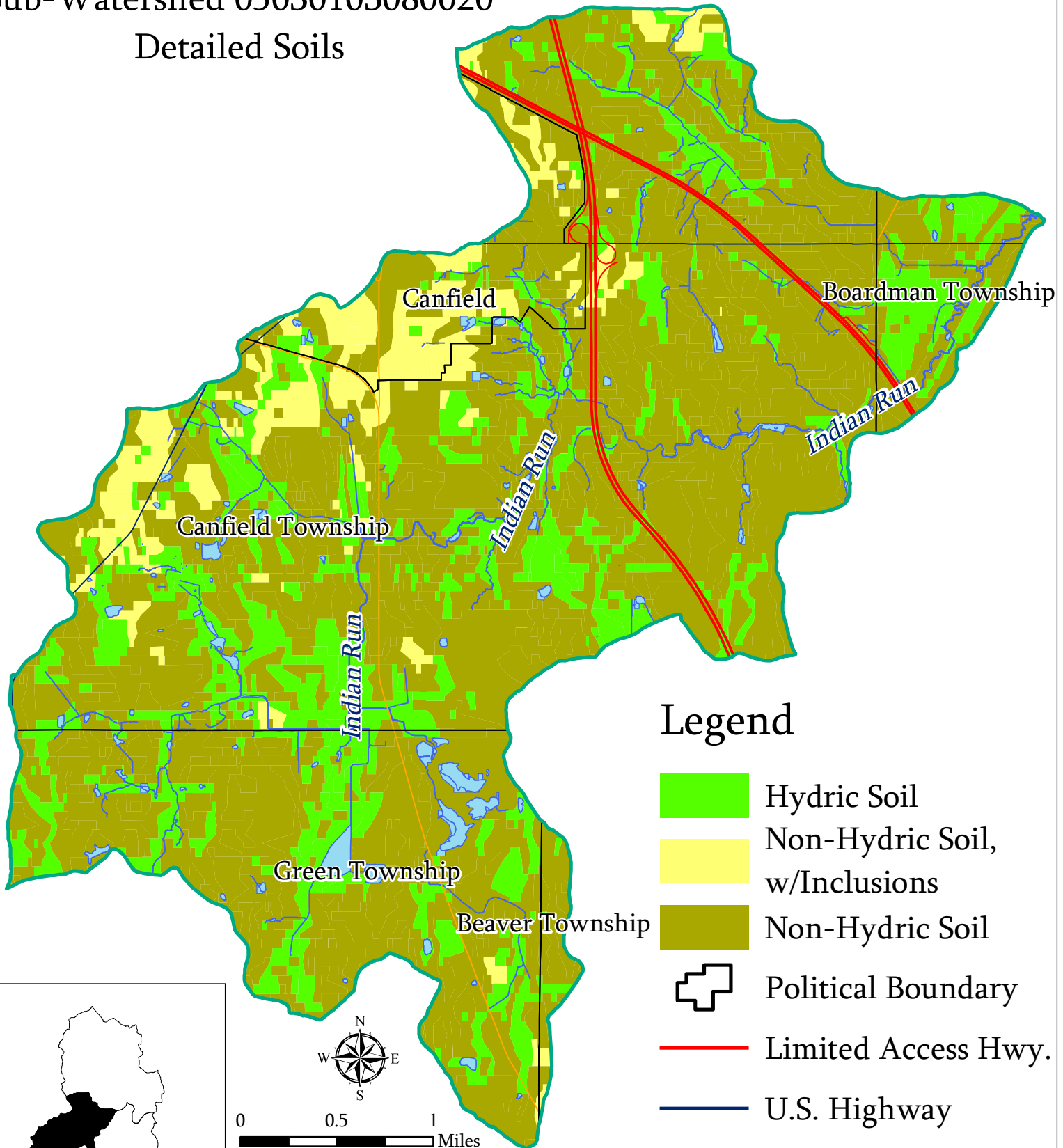











Mill Creek Watershed

Sub-Watershed 05030103080020

Detailed Soils



Legend

-  Hydric Soil
-  Non-Hydric Soil, w/Inclusions
-  Non-Hydric Soil
-  Political Boundary
-  Limited Access Hwy.
-  U.S. Highway
-  State Highway
-  Open Water
-  Stream



Prepared by: The Center for
Urban and Regional Studies
Youngstown State University
Source: Mahoning County
Enterprise GIS Files, US EPA,
ODNR, US Census Bureau
TIGER Files
2.8.07