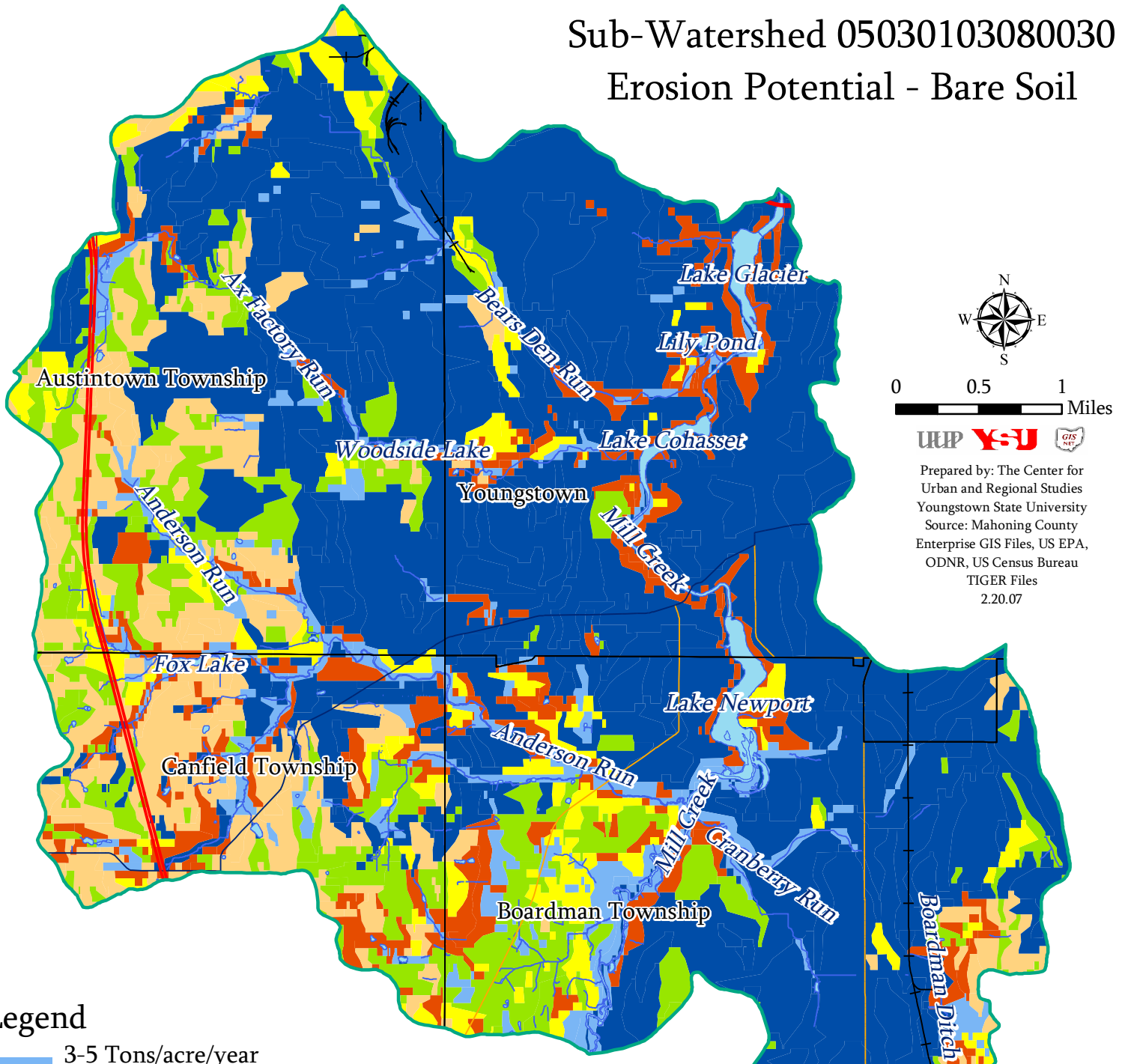


Mill Creek Watershed

Sub-Watershed 05030103080030

Erosion Potential - Bare Soil



0 0.5 1 Miles



Prepared by: The Center for Urban and Regional Studies
 Youngstown State University
 Source: Mahoning County Enterprise GIS Files, US EPA, ODNR, US Census Bureau TIGER Files
 2.20.07

Legend

- 3-5 Tons/acre/year estimated soil loss
- 5-10 Tons/acre/year estimated soil loss
- 10-25 Tons/acre/year estimated soil loss
- 25-60 Tons/acre/year estimated soil loss
- 60-600 Tons/acre/year estimated soil loss
- Not rated - water, gravel pits, quarry, urban soils, etc.
- Political Boundary
- Limited Access Highway
- U.S. Highway
- State Highway
- Railroad
- Open Water
- Stream

