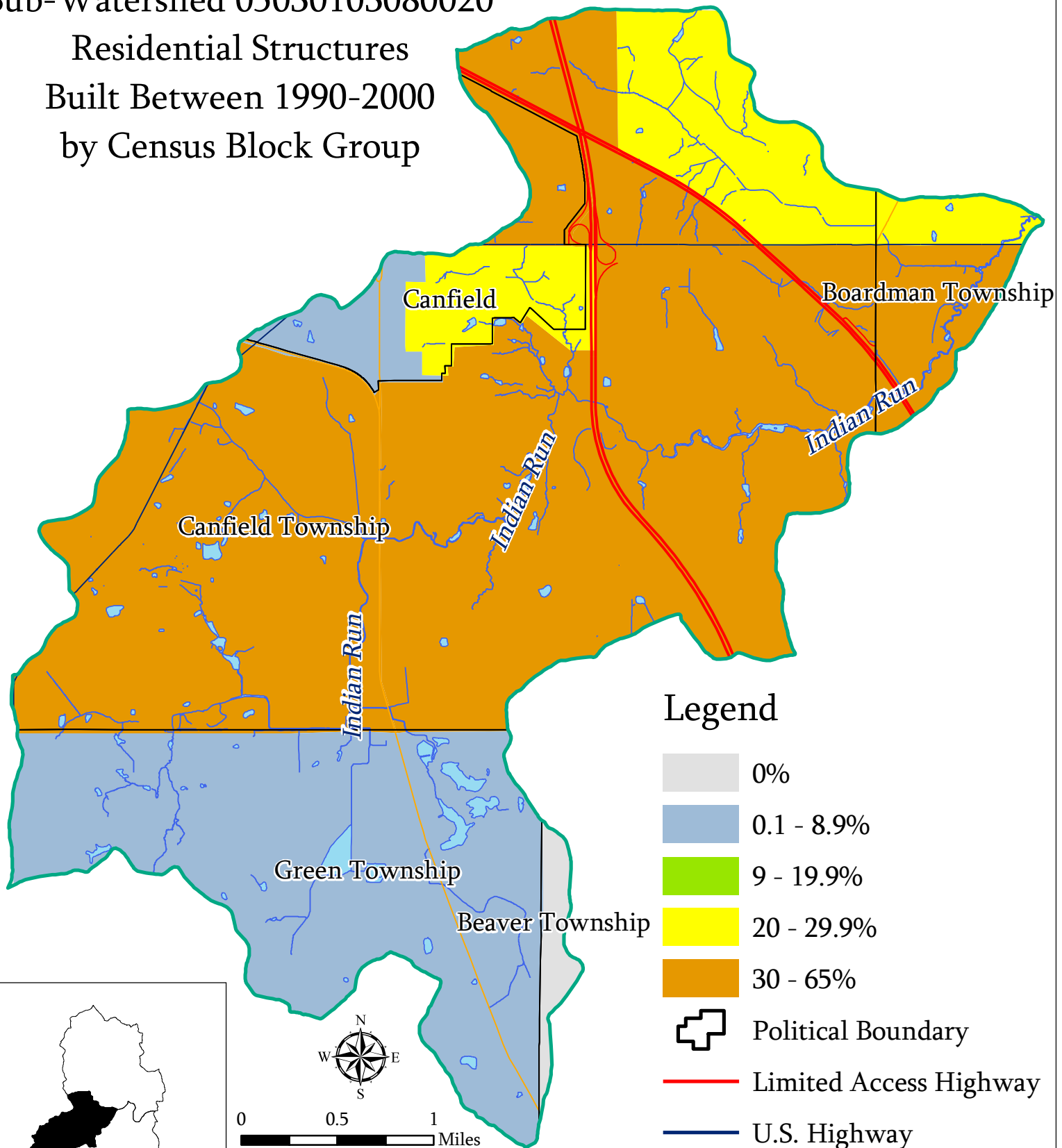


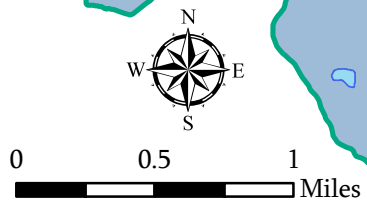
# Mill Creek Watershed Sub-Watershed 05030103080020

## Residential Structures Built Between 1990-2000 by Census Block Group



### Legend

- 0%
- 0.1 - 8.9%
- 9 - 19.9%
- 20 - 29.9%
- 30 - 65%
- Political Boundary
- Limited Access Highway
- U.S. Highway
- State Highway
- Open Water
- Stream



UEP Y-S-U GIS  
Prepared by: The Center for  
Urban and Regional Studies  
Youngstown State University  
Source: Mahoning County  
Enterprise GIS Files, US EPA,  
ODNR, US Census Bureau  
TIGER Files  
2.22.07